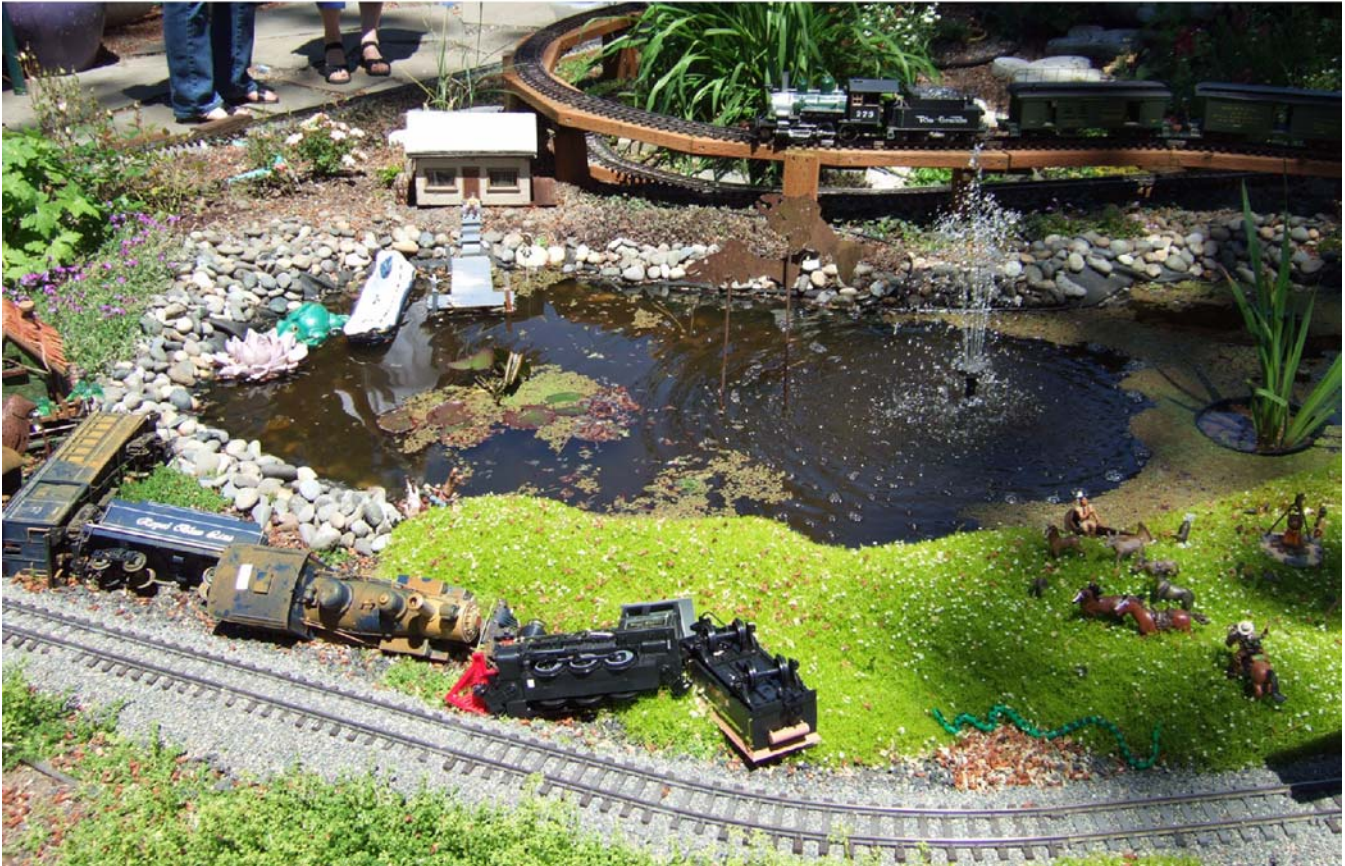


## Penny Walker's Open House

June 14th was a beautiful day for an open house at Penny and Richard Walker's. Penny has had to rebuild her logging railroad more than once due to

falling tree branches and tree removal. At one time during the day there were three trains running on the larger outer track and shorter locomotives took turns on the smaller inner track. The railroad has many "just for fun" features.



Do you see the snake in the grass investigating a terrible wreck?

These photographs and a number of additional photographs, courtesy of Joe Eckardt, of Penny's open house can be temporarily seen at [http://www.eckardt.us/albums/RCGRS\\_Walker\\_Open\\_House\\_06\\_14\\_08/index.html](http://www.eckardt.us/albums/RCGRS_Walker_Open_House_06_14_08/index.html)



A maiden run was made with Penny's new 38-ton two-truck Shay and she received pointers on how to glue on the smoke stack that kept falling off.



She has just completed converting all of her trains to Kadee couplers and found that the trip pin of the coupler hits the edge of the walk-on track crossings. Some tweaking of the road bed or the couplers are a next project.

Joe Eckardt brought stainless steel track that he has been experimenting with to give it a dark appearance. Baking it with olive oil seems to have given him the look he wants, but how is he going to get all of his track into the oven?

### **“Railroads in The Garden” RCGRS Summer tour.**

The tour occurred on June 21st and seems to have been a success. We have not had the evaluation meeting at this writing, but it appears that most of the open houses were well attended. One of the new railroads on the tour this year was Doug Watson's layout under the cedars.





Over, under, and around; plenty of RR action here



A finely detailed RR station



Getting a close-up view on Doug Watson's RR

## **Burlington & Missouri River Railroad**

**By Allan Warrior**

A beautiful day for "Railroads in The Garden" RCGRS Summer tour! Larry Carner came early with his cameras from the Tualitan Valley Public Access Channel and began taping the action before the tourists began arriving. He was on the scene for about three hours. Darrel Dunham's "Consolidation" was just right for pushing a flat car and miniature camera around the railroad. Larry downloaded a rough draft of his tapes to <http://www.youtube.com/lbcwiz> "G-Model Trains" He has promised me an edited disk.

Michael Thompson from the "Argus" newspaper arrived before noon and took a number of photographs and interviewed several of the visitors. The result was a nice article in the June 24th

issue of the newspaper. We are thankful and really appreciated Darrel Dunham and Penny Walker taking over the operation of the railroads during the tour.



Larry Carner records the action.  
Chief engineer Darrel Dunham  
operates the railroad.

Since an article regarding "Creston in Hillsboro" appeared in the Creston, Iowa "Creston News Advertiser" on June 18th, I have received some calls from the area who are either distant relatives or knew the members of the Warrior family. The article on the Website did not include pictures because pictures submitted from outside of the paper can create copyright problems. I have asked the reporter to send me a full copy of the article.

One of the new buildings this year is the FooBar Industries factory, "Makers of the World Famous Widgets and Frammistans." I had ordered a smoke/fog unit for the building, but it didn't arrive until the week after the tour.



FooBar Industries



Train time at the Creston Station

Also new this year was that all of the remote control switches operate from the switch panel.



The former KAW Shortline was discontinued and joined as a branch line to the main railroad. A new amusement park is being developed and has continued to expand. Hopefully much more can be built in the coming year. Penny Walker brought “Thom-

as” and “James” to run around the perimeter of the amusement park. The visiting children thought it was “very cool”.

I finally repainted and decorated three sand cars this spring. I have had these cars on hand for several years, but just never seemed to get “arontoit”. The project made me consider sand; one of the most ubiquitous solids on earth. However, sand has many compositions and specialized uses. The contact patch between a steel wheel and a rail is about the size of a nickel and additional traction is often needed when starting and stopping. The railroads take care to obtain the particular sand that they require and often ship it some distance in these special small hoppers.



## President's Message

Hello Garden Railway Fans,

As I recuperate and regain my strength from an intense schedule of preparation, anticipation and finally the big day of the RCGRS Summer Tour, I reflect on the event with much gladness. It was a grand day at our house with our guest book swelling another dozen pages with visitors registering their names, hometown, number in their party, and comments. To have so many people delight in seeing what we do in this hobby truly adds another layer of fulfillment. My only regret is not being able to spend more time visiting with each guest.

Thank you to Penny and Richard Walker for hosting another delightful day of trains in the garden on June 14. It was a treat to see all that they had accomplished.

At our July business meeting, to be held at the Dervilles on July 12th, we will vote on the proposed by-laws revisions as presented in the June newsletter. If you want your vote to count, please plan to attend and participate.

Happy Rails,  
Gary Lee

## Tom Miller's Very Large Scale Railroad By Bill Derville

We have once again been generously invited to visit Tom Miller's outdoor riding railroad. The date is **Saturday, July 12th beginning at 10 a.m.** This is a great outdoor railroad that our club has enjoyed visiting annually for the past 4 years. Tom has 2 miles of track on his 10 acre property. A ride behind one of his live steam engines takes about 20 minutes and includes a trip over a 100 foot long and 3 story high trestle, and a tunnel as long as a football field.

Tom is also building a world class indoor F-scale (1.20:1) that captures the flavor and in some cases actual scenes on the Cumbers and Toltek Railroad under steam power. This is rapidly becoming one of the finest indoor railroads anyone has ever seen. He also has a great model ship collection.

Tom asks that no children under 16 years old attend this event. He also asks that no one come on the property before 10:00 a.m. We all look forward to a great morning. Hope you can all attend.

After the visit to Tom's railroad, we will be meeting at Bill and Brenda's open house for lunch (after 12:00 p.m.) and running trains.

## RCGRS Officers and Staff

**President, Gary Lee**

503-695-2550, [garylee@constructavision.com](mailto:garylee@constructavision.com)

**Vice President, Jeff Lange**

360-696-0799, [jeffdlange@comcast.net](mailto:jeffdlange@comcast.net)

**Secretary, Barbara Clark**

360-737-0176, [clarkdani@comcast.net](mailto:clarkdani@comcast.net)

**Treasurer, Steve Cogswell**

503-342-6128, [scogswell@tkw.com](mailto:scogswell@tkw.com)

**Yardmaster, Dennis Peoples**

503-997-7049, [dennispeoples@verizon.net](mailto:dennispeoples@verizon.net)

**Annual Garden RR Tour Chair, Bill Derville**

503-645-1771 [bderville@generaltool.com](mailto:bderville@generaltool.com)

**Club Store Chair, Margaret Kookan**

360-695-0389, [dmkookan@pacifier.com](mailto:dmkookan@pacifier.com)

**Open House and Education Chair,  
Christina Brittain**

360-837-3711, quinnmountain@aol.com

**Module SIG Chair, Dennis Peoples**

503-997-7049, dennispeoples@verizon.net

**Newsletter Editor, Allan R. Warrior**

503-648-8112 arwarrior@verizon.net

**Webmaster, Allan S. Warrior**

warriora@yahoo.com

**Immediate Past President: Darrel Dunham**

253-222-8367, dwdunham.@msn.com

## Schedules & Timetables

Make sure you check the calendar on our Website at <http://www.rcgrs.com/> for the most up-to-date schedules and timetables.

It is the current Society's policy to attempt to have an event or open house on every second Saturday of the month. Other and additional dates during a month are also available and encouraged. Anyone interested in having an Open House or sponsoring an event, please contact **Christina Brittain**.

**Saturday, July 12th beginning at 10 a.m.** Tom Miller has again invited RCGRS to visit his 1-1/2 inch scale railroad in Scholls, OR. The railroad features 12,000 feet of track, a 30 foot tall by 400 foot long trestle with a Howe truss center span, and a long tunnel. The estate is beautiful. This railroad is not normally open to visitors, so this invitation is a real treat. Tom's address is 18055 SW Seiffert Rd, Sherwood, OR.

The second part of our RCGRS meeting for this Saturday will be at Bill and Brenda's House. See details below.

**How to get there:** Take the OR-210/Scholls Ferry Rd. near Washington Square toward the southwest. (approx. 7 miles). At the flashing yellow light where OR-210/Scholls Ferry Rd. meets River Road, turn LEFT toward Scholls. Go past the store at the intersection of OR-219 and OR-210/Scholls Ferry Rd. for approx 0.09 miles. Turn LEFT onto SW Seiffert Rd. (0.70 miles).

**July 12, 2008:** Bill & Brenda Derville, 930 NW 170 Place, Portland, OR. 503-645-1771, bderville@generaltool.com

**Layout:** Bill Derville's railroad operates on constant 24-volt AC track power and uses the NCE DCC system. Only guest locomotives that operate on this system or battery power can run on Bill's tracks. Mike Greenwood installed this DCC system and will present a seminar on how the NCE DCC system functions and its capabilities. Everyone will be able see the theory in operation. It should be a great demonstration!

### To drive from Tom Miller's house to Bill Derville's House:

1. Start at Tom Miller's, 18055 SW Seiffert Road Sherwood OR 97140-7307
2. Turn left from the driveway onto Seiffert Road for 0.7 miles
3. Turn right onto Highway 219 (Hillsboro Highway) for 1.9 miles
4. Turn right at caution light onto Scholls Ferry Road (highway 210) for 0.5 miles
5. Turn left onto Cherry Hill Road for 2.3 miles. Bear left at the four way stop to continue straight on Cherry Hill Road.
6. Turn right onto Farmington Road (highway 10) for 2.3 miles.
7. Turn left onto 185th Avenue for 2.6 miles
8. Turn right at the light just before Baseline Road. It leads you around 2 sides of a square to Baseline.
7. Turn right onto Baseline Road and cross the MAX tracks for 0.5 miles
8. Turn left at the light onto 173rd and go 0.9 miles crossing Walker Road.
9. Turn right onto 170th Place into housing development Merewood.
10. First left off 170th is our cul-de-sac (170th Place). Arrive at 930 NW 170th Place, Beaverton Oregon 97006 and have some lunch!

**August 24, 2008, Sunday:** Open house at Judith Hinnimon's, 4770 SW 98th, Beaverton, OR 503-646-1288, tootnlady1@aol.com

**September 13, 2008, Saturday, 1:00 to 5:00 p.m.:** Open House at Harvey and Arlyn Becker in Bend, Oregon. **The rail road will be open at 11:00 a.m. for early arrivals.** The host will provide a main dish. Other dishes of salads, snacks, and side dishes are welcome. 541-383-1864 bharvey@bendbroadband.com

**Layout:** Please bring trains to run on either battery or track power. Railroad is track powered with a remote control panel for all track blocks and switch machines. Layout is a folded over dog leg with reverse loops at each end; allowing trains on the mainline to run automatically. Mainline track is 275 ft with additional 125 ft track for: yards, siding, & turnouts. All curves utilize LGB R1 (5ft dia.) track, grades average 3.5% to 5.5%, bridge clearance = 8.5 inches, & max. trestle height of 24 inches. We operate Bachmann spectrum locomotives, LGB mogul, and H-L-W 4-4-0.

**Directions:**

**From Mt. Hood:** take RTE 26 thru government camp to RTE 97 South. At Madras follow signs to Bend. In Bend, get off at Exit 136 (Butler Mkt Rd) and turn right onto Butler Mkt Rd (stay in righthand lane). At first signal cross over RTE 97, (Riverhouse on right corner) and proceed up Mt. Washington Drive. Take left onto Todds Crest Drive. Third house on Right. Parking on street.

**From I-5 at Salem:** take I-5 South, get off at EXIT 253 (RTE 22, Sytaton/Detroit lake), and turn left onto RTE-22/ N Santiam Hwy. Follow N Santiam Hwy. N Santiam Hwy becomes RTE-20 at junction of RTE 126. Continue on RTE 20 thru Santiam Pass and Sisters into Bend. In Bend RTE 20 merges into RTE 97. Proceed south on RTE 97 and turn right onto Mt Washington Drive (Riverhouse on corner). Proceed up Mt. Washington Drive &

take left onto Todds Crest Drive. Third house on Right. Parking on street.

**October 4, 2008, Saturday, 5:00 to 8:30 p.m.:** Open house at Shannon Pratt's railroad, 6677 SW Bancroft Way, Portland, OR. The track on Shannon's railroad only permits Marklin equipment to run on it, but both Party Town and Farmdale will be celebrating Halloween in grand style.

Host will provide soft drinks, coffee, beer, wine, snacks. A-G desserts, H-O side dish, P-Z main dish. 503-292-9464, shannon@shannonpratt.com

**October 12, 2008, Sunday:** RCGRS has recently contacted the Sumpter Valley Railroad to arrange an excursion ride scheduled for Sunday, October 12th. This will be an exclusive trip for our club. We will have the whole train to ourselves, and promises to be a great day. More information to follow.

**October 25, 2008, Saturday, Noon until midnight:** Annual Ghost Train Event. Plan now to decorate a car or locomotive (or train) with a ghoulish delight. Make sure your design will pass through a typical bridge or tunnel. The railroad is track powered. Open house at Bill and Jean Dippert's; 2650 NW Robinia Lane, Portland, OR 97229. 503-646-9783, bandjdippert@zcloud.net.

**November 8, 2008, Saturday, 11:00 a.m. to 5:00 p.m.:** Annual workshops, luncheon, presentations, and raffle. Kingstad Center, 15450 SW Millikin Way, Beaverton, OR 97006. Steve Cogswell, Chair. 503-650-4682, scogswell@tkw.com

**December 2008, Friday:** The date will depend on the schedule of the Christmas ship parade. Jan & Rae Zweerts will be hosting an open house on their houseboat at Jantzen Beach, The Christmas ships will be sailing past their house that same evening. Jan's European railroad which is on a floating deck next to the houseboat will be in operation.

**Editor's Note: The deadline for the August 2008 newsletter is July 25, 2008.**